



L.E.A.D.
Teaching School Hub
Lincolnshire

X @LEADTSHub

f @LEADTSHub

🌐 www.leadtshublincs.co.uk



GET INTO TEACHING

ADVICE FOR 14 – 18 YEAR OLDS

“What do you do for a living?”

“I change lives!”

Are you considering a career in teaching?

L.E.A.D. Teaching School Hub are here to help.



Why teach?

Teachers don't just have an influence on the child they teach, but also the adult they become.

There aren't many jobs where you go home each day knowing you have made a real difference to a child's life. Teachers are encouraged to think of creative ways to engage their students and you'll be able to use your experience to help bring your subject to life.

Teachers have the opportunity to be part of something really special: being part of a team, opportunities for life-long career development and opportunities to be part of wider opportunities of school life, such as visits and new experiences.



Top Ten: Why become a teacher?

1

No two days are the same

If you're the type of person who loves every day to be different, teaching may be just right for you. Teaching is a job with built-in variety, as you work through new units, teach new topics, and work with new children each year.

2

You'll get to learn as well as teach

One of the main reasons for wanting to teach is devotion to lifelong learning. Teachers not only get to share their existing knowledge, but they get to dig deeply into topics and the latest research to learn continually along the way.

3

Teaching makes a difference, with visible results

If you ask most potential teachers "Why do you want to become a teacher?" they'll mention the ability to make a real difference in students' lives. Unlike other professions where you may work behind the scenes, as a teacher you'll be up front to see the visible changes. There's nothing quite like seeing the spark of understanding on a child's face as the learning "clicks" for them. Why teach? So that you can have a positive impact upon the life chances for students from all walks of life, imparting lessons that will help shape the next generation.

4

Teachers can work all over the world

Teaching is a highly transferable skill. If you train to become a qualified teacher, you'll be able to work pretty much anywhere in the world. Whether it's teaching English or a specialist subject, you can work and explore at the same time. International schools are growing in number all over the world and many are looking favourably upon teachers who have trained and qualified in England. To teach in England and Wales, you will need Qualified Teacher Status (QTS). As QTS is not internationally recognised, to teach in other countries, a Postgraduate Certificate in Education (PGCE) will be needed.

5

Holidays

Whilst this may not be the number one reason to become a teacher, regular, paid holidays, including the summer break, are another great perk that differs from other professions.

6

You'll have job security

While other jobs can be easily automated and replaced by technology, at the heart of teaching is human interaction. Teaching can therefore offer job security and a longer term option for career progression.

7

Teaching is a highly social job

Another bonus for many is the chance to work in a sociable atmosphere. You'll work as part of a team with your colleagues, while interacting with students each day. Teachers also have the opportunity to become an integral part of the community, getting to know parents and community members.

8

Responsibility and Autonomy

As a teacher you will be responsible for a range of aspects such as planning, teaching, bringing about effective learning, assessing and managing behaviour in your own classroom or department. In the context of the school in which you are based, you will be able to make decisions regarding what's best for your students in order to bring about life long learning. You will have the opportunity to inject your own personality into your job along the way.

9

Competitive starting salary

If you have qualified teacher status (QTS), you'll get a minimum starting salary of £30,000 (or more in London) as a primary or secondary school teacher in England. Your salary will be reviewed every year, with most teachers moving up the pay range annually. A typical teacher could earn at least £41,333 (or more in London) within 5 years.*

10

You'll have more than just a job

At the end of the day, teaching offers far more than just a pay cheque. You'll have a satisfying career, knowing that you've made a difference in many lives. Through interacting with students and community members from a range of different backgrounds, you'll gain greater understanding of your own society and flex your creative skills. So why teach? For the personal growth.





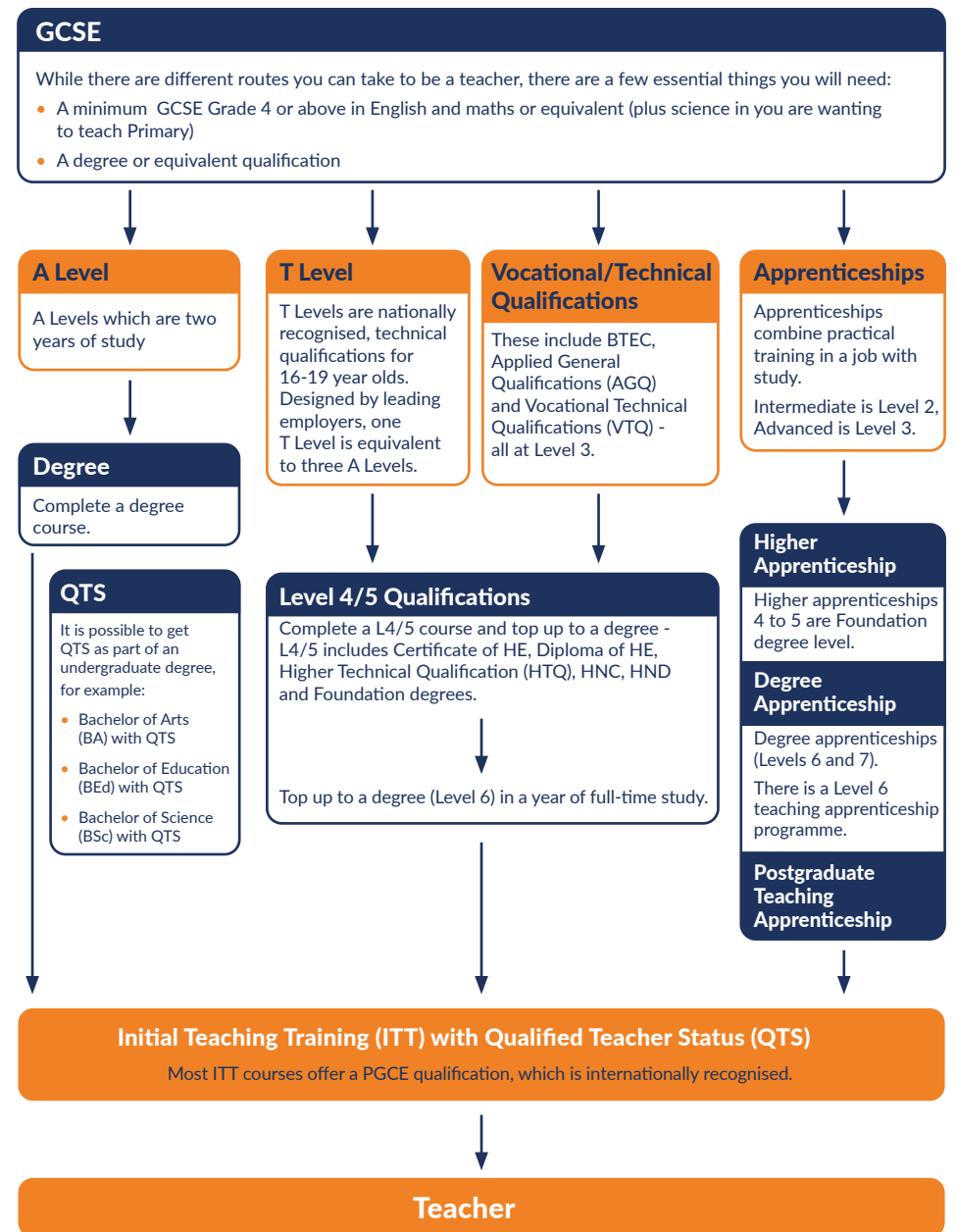
Where can I teach?

As a teacher you can teach in the following settings:

- **early years** (children up to the age of 5)
- **primary** (ages 5 to 11)
- **secondary** (ages 11 to 18)
- **further education** (for example, teaching at further education colleges or Sixth Form colleges)

How can I get into teaching after GCSEs?

There are lots of different routes you can take into a teaching career after your GCSEs.



How much does it cost to train to be a teacher?

Undergraduate and postgraduate teacher training course fees are around £9,250 per year. You can apply for tuition fee and maintenance loans, even if you already have a student loan.

If you're interested in teaching certain subjects, you might be able to get up to £30k tax-free to support you while you're training. This money does not have to be paid back. Full details of the cost to train to teach and funding available can be accessed via the QR code.



I would like to get some classroom experience to help me decide whether teaching is for me. Is this possible?

Yes! Experiencing life in a school can help you decide if teaching is right for you and who you want to teach. This is a good way to give you a taste of what the classroom is really like. You can visit schools to get unpaid experience in the classroom before you start your initial teacher training (ITT). Follow this link to find a school in your area who will be able to offer you school experience. Contact us at L.E.A.D. Teaching School Hub if you want to arrange an experience day!



Are there any experts who can help me on my journey to becoming a teacher?

Charlotte and Laura both work at L.E.A.D. Teaching School Hub and would be delighted to offer expert advice to support you on your teacher training journey. Please email admin@leadtshub.co.uk for free advice and support.

If you have started a degree, you are also able to access **free**, one-to-one support by phone, text or email for a DfE Adviser. You can talk to them as little or as much as you need.

Can I go to university to study for my degree and then train to be a teacher 'on the job'?

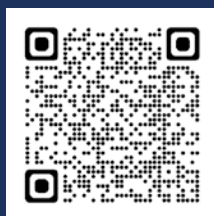
To teach in England and Wales, teachers need Qualified Teacher Status (QTS). Some universities offer an undergraduate degree which includes QTS whereas as some students will complete their degree and gain QTS as a postgraduate qualification. QTS can be undertaken at a university or through a School-Centred Initial Teacher Training (SCITT) provider. Both routes will offer placements in school alongside taught theory and practice.

Please see pages 11 to 14 for further information for each local ITT provider.



I would like to train to teach locally. Is this possible?

Yes, there are a number of local ITT providers in our region. Further details can be found over the next few pages, or visit L.E.A.D. Teaching School Hub website for further information:



Bishop Grosseteste University



BISHOP
GROSSETESTE
UNIVERSITY

t: 01522 583658

e: enquiries@bishopg.ac.uk

w: www.bgu.ac.uk



Established in 1862 as a teacher training college, Bishop Grosseteste University (BGU) has been educating teachers for over 160 years, and now offers a comprehensive suite of programmes providing routes into the primary, secondary, and further education sectors, as well as a range of postgraduate qualifications for teachers.

With a rich history as its foundation, BGU now stands as a leading institution in teacher training. Rooted in a deep understanding of pedagogy, the University combines tradition with cutting-edge methodologies, setting the standard for transformative education. Trainee educators at BGU also benefit from a supportive community that values diversity, inclusivity, and a passion for fostering learning.

The University offers a range of routes into teaching, through traditional undergraduate degrees, postgraduate programs and specialised flexible pathways for career changers, such as foundation degrees and degree top-ups. Working in partnership with over 500 schools and colleges, BGU provides opportunities for its trainees to gain real-world experience in diverse classrooms.

BGU offers a collaborative environment where history and innovation converge, shaping educators equipped with the skills, knowledge, and practical experience needed to make a meaningful impact in the field of education.



Educate Group Initial Teacher Training



t: 07973 286995
e: itt@educate-group.co.uk
w: www.educate-group.co.uk

If you want to gain Qualified Teacher Status (QTS) through a practical, 'hands-on', school-based route in a school of your choice, then Educate Initial Teacher Training is for you.

Educate is a large ITT provider, with a long-standing reputation for successful Primary and Secondary QTS programmes based in varied and diverse partner schools.

You have the unique opportunity to train in a school near to where you live and gain QTS with a Post Graduate Certificate of Education (PGCE) (60 Master's credits), validated by Leeds Beckett University.

Trainees spend a full-time year teaching and training in schools and also attend provider-led lecture/workshop sessions to enhance subject knowledge, general classroom practice and teaching pedagogy. To support trainees, provider-led training takes place once a week and is predominantly online, reducing both the time and cost of travel to trainees. Centralised training sessions cover content such as High Expectations, Behaviour Management, How Pupils Learn, Adaptive Teaching, Classroom Practice, Curriculum and Assessment in line with the Core Content Framework. This is supplemented by opportunities to observe other teachers in a range of school settings and to undertake a variety of school-based training enhancements, including a six-week placement in a contrasting school and short placement visits to other schools for e.g., a Special School.

Trainees are supported by expert practitioners, individual mentors, and a personal Link Tutor.

With Educate, Trainees enjoy the advantage of an 'on the job' experience, where the realities of life as a teacher are fully explored and understood.

We are a National Provider in England with School Partnerships across Cheshire, Shropshire, North East, East Midlands, Leeds, Bradford, Yorkshire & the Humber.



Exchange Teacher Training - Lincolnshire Three Counties



t: 0345 145 0075 (option 1)
e: info@exchangeteachertraining.com
w: www.exchangeteachertraining.com

Exchange Teacher Training partnership brings together decades of experience in delivering Initial Teacher Training across Lincolnshire, North Lincolnshire & North East Lincolnshire as well as Yorkshire & the Humber and The North East with 200+ placement schools across the region.

Our programme prepares you exceptionally well for your career in teaching, enabling you to thrive and improve the life chances of children and young people in our communities.

Working with high performing schools and trusts, we offer the opportunity to train and draw upon the expertise of great teachers, school leaders and national experts. Developed in partnership with Evidence Based Education and local experts, our ambitious curriculum will develop the knowledge and skills you need to become a great teacher.

Much of our programme is delivered in local schools and at weekly centre-based training sessions, you and your peers will engage with the most recent and rigorous educational research to explore what great teachers know and do, before applying your learning on placement. Our curriculum is ambitious, informed by cutting edge research and the deep practical wisdom of local experts.

You will be immersed in classroom practice from the very start, but you will not be alone; Your mentor will oversee your learning journey and a lead mentor, subject lead and dedicated central team will all be devoted to ensuring your success on our programme. We provide highly personalised support which prioritises your progress and well-being. You will build your knowledge, understanding and skills during two contrasting school placements but in addition to this we will also provide you with experience days to gain specific insights into a child's educational journey.

You will join an ethical partnership of schools and organisations who are committed to addressing disadvantage, improving our communities and caring for the environment.



Lincolnshire SCITT



t: 01522 889297
 e: scittenquiries@prioryacademies.co.uk
 w: www.lincolnshirescitt.co.uk

Lincolnshire SCITT is a well-established provider with a proven track record of success, within both the primary and secondary sector. Our large, geographically spread partnership of schools demonstrates the keen commitment to developing and nurturing the next generation of teachers. **Our schools and strategic partners are dedicated to improving the life chances of young people across Lincolnshire and Greater Lincolnshire and this starts with training high quality teachers!**

The nature of SCITT provision is that it is a hands-on and practical approach to training, where teaching commitment builds gradually across the year and at a pace determined by trainee experience and confidence. This personalised approach ensures our trainees get the best from the training year; scaffolded and supported at every step. SCITT provision also offers the chance to experience the whole school year, ensuring trainees develop an embedded and well-rounded understanding of the role of a teacher.

Our strong local reputation, means that we have a large network of high-quality schools to undertake training in. This means that trainees can, if they wish, stay local to where they need to be, securing an effective work life balance. We are keen to work with applicants to discuss options for training schools in their local region.

We partner with local subject experts and curriculum hubs, to ensure that training is led by local or national experts. Our evidence informed curriculum, builds trainees' knowledge and skills to be a teacher progressively across the training year, ensuring all are career ready!

On a weekly basis, all trainees will undertake a mentor meeting and receive regular training and feedback from an expert mentor. Trainees and mentors will work collaboratively across the year, with the mentor demonstrating and modelling strategies to the trainees, to help them to create mental models of best practice, that they can then apply.

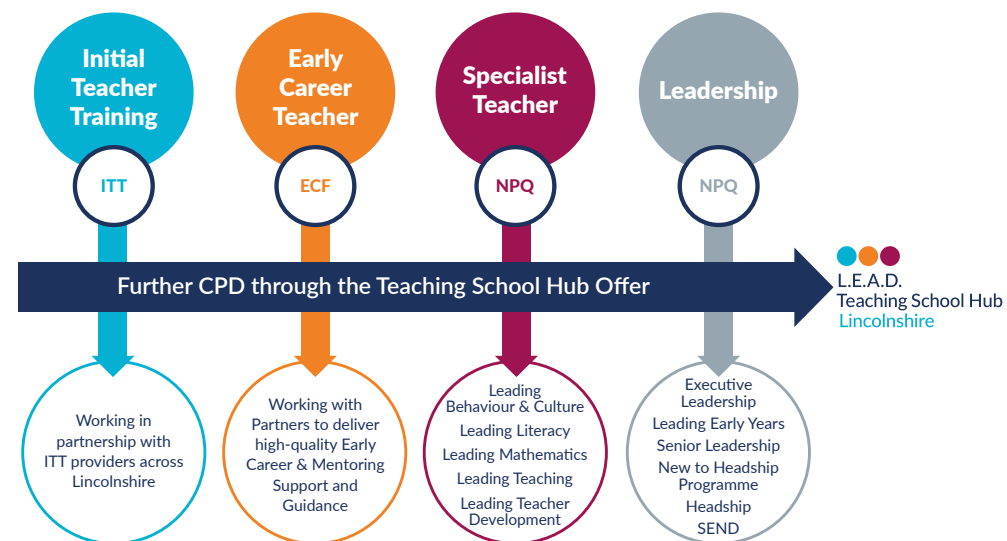
Lincolnshire SCITT is extremely proud of its strong partnership with the University of Lincoln, where trainees can access University facilities and support from a wide range of services.



With you every step of the way...

L.E.A.D. Teaching School Hub offers the 'Golden Thread' of support and professional development in Lincolnshire; we are with you at every stage of your professional development.

From initial and early careers teacher training, through to subject leadership training, the early headship programme, specialist and leadership National Professional Qualifications (NPQs), L.E.A.D. Teaching School Hub provides a high quality, coherent and progressive approach to the development of teachers and leaders in every phase, subject and context throughout their career.



GLOSSARY

- | | |
|------------------------------------|---|
| DfE - Department for Education | NPQ - National Professional Qualification |
| ECF - Early Careers Framework | PGCE - Postgraduate Certificate in Education |
| ECT - Early Careers Teacher | QTS - Qualified Teaching Status |
| HEI - Higher Education Institution | SCITT - School-Centred Initial Teacher Training |
| ITT - Initial Teacher Training | SEND - Special Education Needs |



L.E.A.D.
Teaching School Hub
Lincolnshire

L.E.A.D Teaching School Hub
The Regatta, Henley Way, Lincoln LN6 3QR

t. 01522 214459

e. admin@leadtshub.co.uk

www.leadtshublincs.co.uk  