

Lincoln Base
Carrington Drive
Lincoln
LN6 0DE

Tel: 01522 682319

Baumber Base
Lincoln Rd
Baumber
Horncastle
LN9 5ND

Tel: 01507 355916

Amber Hill Base
Sutterton Drove
Amber Hill
Boston
PE20 3RQ

Tel: 01205 743107

Pilgrim
T H E
S C H O O L

**Hope filled Opportunities Provided for
Everyone**

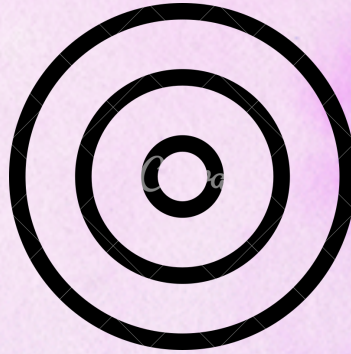
Information for Parents

**enquiries@pilgrim.lincs.sch.uk
www.pilgrim.lincs.sch.uk**

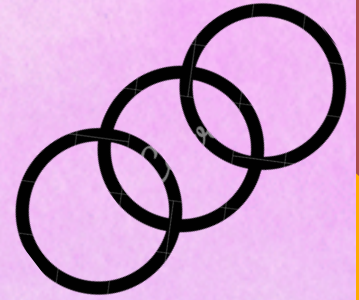
Building Hope in School Communities



Pathways 'being able to imagine'



Goals 'thinking to the future'



Agency 'pursuing a desired future'

It can be learned through:

- Mastery of the Curriculum
- Hearing a Hopeful Voice
- Learning Hopeful Narratives
- Assessment for Learning: Effective Feedback
- Talking and Thinking "Hopefully"

Caring and empathetic relationships

What is the impact?

- Improved educational outcomes
- Improved mental health and wellbeing
- More compassionate communities

Compassionate Schooling

MR BARNES

Head Teacher



I am really delighted to welcome you into our School community. I hope that you and your child settle in well and they enjoy their school days with us.

We act on behalf of Lincolnshire County Council to fulfil their duties under Section 19 of the 1996 Education Act. We provide education to pupils who are not able to access their mainstream school due to illness, physical or mental, short or long term. We have the opportunity to do things a little different to mainstream schools to accommodate the pupils we have.

The curriculum is personalised. Pupils follow a curriculum that is age appropriate and comparable with that of their peers in mainstream settings. In addition, pupils can access learning such as social skills, a bespoke personal development course called Well-being on Wednesday (WOW), and lego therapy. The Duke of Edinburgh Award is a popular option as well.

The work of our Pastoral Support and Welfare Specialists is key to ensuring that pupils well-being is supported and pupils are helped into either returning to their mainstream school or onto their next phase of learning. We pride ourselves on our pastoral care and hope led culture.

We are a hope led school. We draw upon the work of positive psychologists such as Rick Snyder, Shane Lopez, Martin Seligman, and Dante Dixson. We passionately believe that a child's history is not their destiny; that a person's current circumstance does not dictate their future.

So, regardless of the experience of education you may be coming from, know that you are welcome here; this is a place of hope.

Steve Barnes, B.A. (Hons), MSc

SEND

I would like to introduce myself, tell you a little bit about my role and also how to contact me. My name is Elena Wilson and I am the SENDCo at The Pilgrim School. I have been working at The Pilgrim School since September 2018 and have been the SENDCo since January 2023. Alongside my SENDCo role I also teach Maths and Psychology.



A SENDCo (Special Educational Needs and Disabilities Coordinator) aids the teaching and learning of pupils with special educational needs and/or disabilities within their primary or secondary school. I work alongside your child's Pastoral Support and Welfare Specialist, Academic Link and Teachers as well as their mainstream school and other outside agencies to support your child and ensure they are receiving the correct support. My role includes ensuring that pupil's Educational, Health and Care Plans (EHCPs) are being met, interventions are put in place to provide additional support and that children with unmet special educational needs are identified.

Due to the nature of the pupils that attend our school, all pupils are added to our SEN register when they start with us. If your child needs anything additional to our normal offer such as an additional intervention you will be informed of this. However, all of our pupils, when appropriate, take part in a comprehensive reading assessment which provides all the insights needed to guide literacy growth for emergent readers, struggling readers, and high achievers. Dependent on the outcome of this assessment pupils will then be put on different reading pathways, some of which may involve reading intervention or further testing. If your child is recommended for further testing a member of staff will be in touch with you to organise this.

More information about our SEND provision can be found in our SEND information report on the school website.

I am always happy to have a conversation if you have any concerns or queries.

You can contact me via:

- Email: elena.wilson@pilgrim.lincs.sch.uk
- Mobile: 07572173737
- Alternatively, you could call one of the bases who will be able to put you in touch with me

Elena Wilson

SAFEGUARDING CONTACTS

Advice on any aspect of Child Protection and Safeguarding may be sought from the Safeguarding Team;

Designated Safeguarding Lead (DSL)



Bev Lee
07534 644942

Deputy Designated Safeguarding Lead (DDSL)



Mel Findon
07984 933781

Our local contact numbers are:

Safeguarding of children concerns
(Children living in Lincolnshire)

01522 782111
Lincolnshire's Children's Services Customer Service Centre for reporting concerns and Early Help Team for Advice

Emergency Duty Team
01522 782333 (6pm-8am + weekends and Bank Holidays)

Safeguarding of children concerns *(Children living in other Authorities)*

Please add in relevant authority contact numbers if applicable as concerns for children need to be reported to the local authority in which the child resides (or state n/a)

Allegations against /concerns about adult(s) working with children

Lincolnshire Local Authority Designated Officers (LADO)
Paul Fisher, Kim Murray, Ildiko Kiss & Fiona Watters

01522 554674 LSCP_LADO@lincolnshire.gov.uk

Staff must report concerns to the Head teacher or in the event of concerns about the Head teacher concerns must be reported to the Chair of Governors.

The Head/Chair must contact LADO to discuss concerns & course of action.

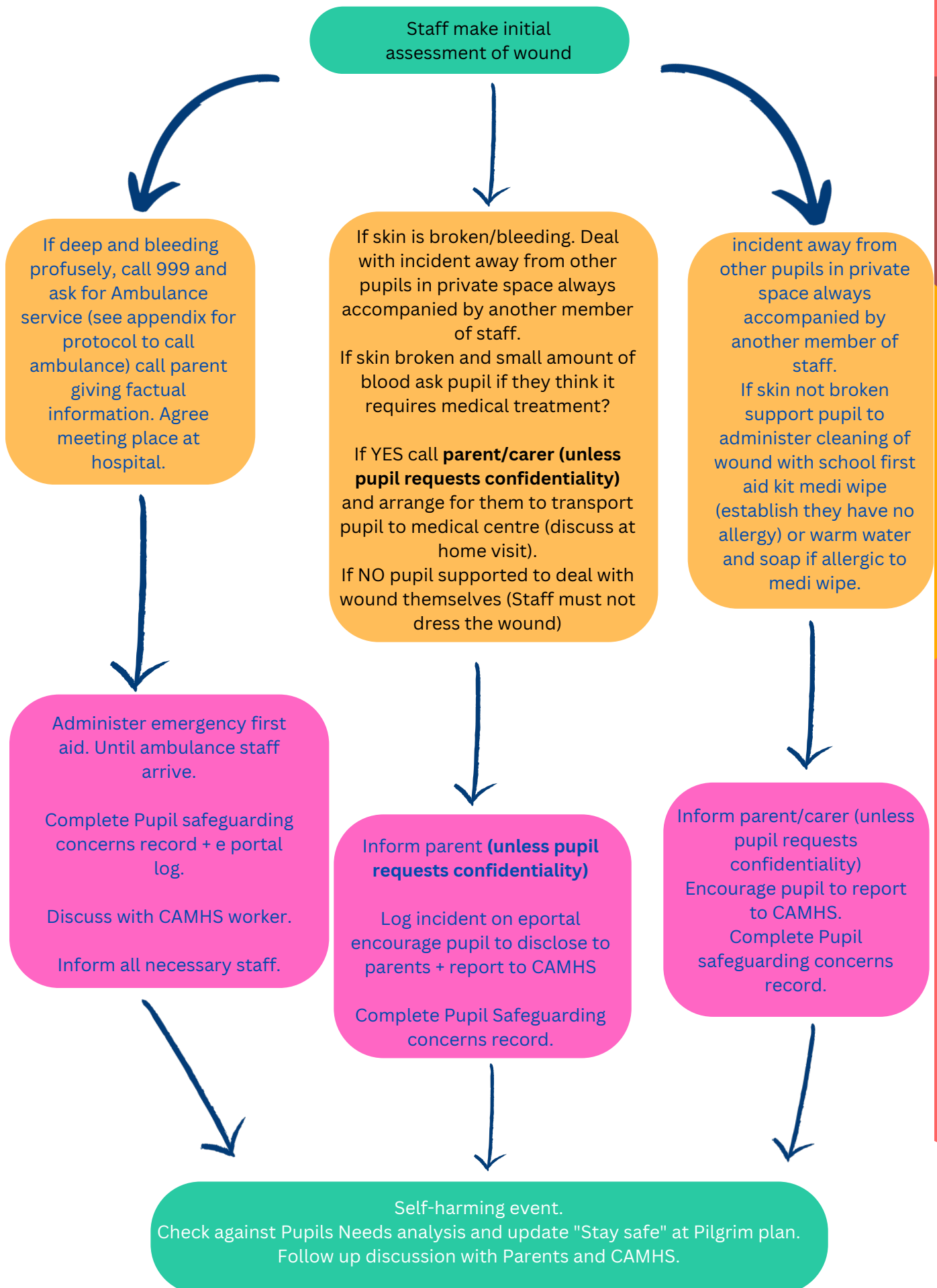
Police (Emergency)
Police (Non-Emergency)

999
101

LCC Safeguarding in Schools *for advice around safeguarding policy, audits, training etc.*

Ruth Fox
Stephanie Knox
safeguardinginschools@lincolnshire.gov.uk

SELF - HARM RESPONSE PATHWAY



Dear Parent/Carer,

In December 2019 we became an Operation Encompass School, becoming part of a national scheme which runs jointly between all schools and the police.

Operation Encompass is the reporting to schools, prior to the start of the next school day, when a child or young person has experienced, any domestic abuse.

Operation Encompass will ensure that a member of the school's staff – the Designated Safeguarding Lead, is trained to allow them to liaise with the police and to use the information that has been shared, in confidence, while ensuring that the school is able to make provision for possible difficulties experienced by children, or their families, who have recently experienced a domestic abuse incident.

We are keen to offer the best support possible to all our pupils and we believe this will be extremely beneficial for all those involved.

This information shared with the school is already covered in the schools' existing privacy notice. For further information in relation to how personal data in relation to yourself and your child(ren) is processed, please refer to Lincolnshire Police's privacy notice which can be found on their website here:

<https://www.lincs.police.uk/resource-library/data-protection/privacy-notice/>

Steve Barnes
Head Teacher

Live-streaming protocols and access to Microsoft Teams September 2022–23

Students

- Dress should be appropriate
- Join sessions no more than 5 minutes before start-time
- Participate from a communal area at home
- Usual classroom behaviour expectations apply
- If mute is actioned, use the CHAT tool to indicate when you want to ask a question. The staff member can then unmute you
- If it is a 1:1 lesson, an adult must be present in the same room as you at home
- Sessions will be recorded for everyone's safety

Staff

- Parent/Carer must have provided written consent
- Joining instructions should be issued in advance
- A register of participants should be taken and a record of length, date and time
- Sessions should be recorded via the platform
- If the session is not taking part in the School then the background must be blurred
- Sessions must be kept to a reasonable timeframe
- Sessions will be recorded for everyone's safety

The school's Acceptable Use Policy applies to staff and pupils

To access Microsoft teams simply follow the instructions below:

1. Open a web-browser, such as Edge / Chrome / Safari / Firefox, and go to www.office.com
2. Login using your normal school email address and normal school logon password
3. Choose Teams from the list of options displayed on the left
4. If you are logged in and a staff member calls you will hear a ringing noise. You can then pick up the call and join in.



If you have any enquiries regarding how to log in to Microsoft teams please contact your base admin, chloe.nelson@pilgrim.lincs.sch.uk (Lincoln), lynda.martin@pilgrim.lincs.sch.uk (Amber Hill) or eva.stanton@pilgrim.lincs.sch.uk (Baumber)



Most of our DofE provision within the school is now integrated into our other subjects. However, our students will be encouraged to use existing or previous hobbies and skills where possible. The bronze award is made up of 4 sections: Physical, Skill, Volunteering and Expedition. Our students will be encouraged to partake in 1hr a week, to cover three of the sections for a period of time. The final section, the Expedition, is a 2 day walk with a camp over at one of our bases.



Otto

Dear Parent/Carer

Here at The Pilgrim School we have been researching the benefits of a school dog for our community as it has frequently been requested in 'pupil voice' surveys. I am therefore excited to announce the arrival of the newest recruit to our school.

Otto is a labradoodle puppy who will be undertaking training to become our school dog. He joined my family at eight weeks old in the middle of June 2022 and will be attending school gradually (all three bases) from a young age. He has been carefully chosen for temperament, coat, size and ease of training.

Labradoodles are known to be good with people, intelligent and low shedding, which means they are highly unlikely to shed fur. Otto is a second generation labradoodle (Mum is a labradoodle, Dad a miniature poodle). I have seen both parents to check temperament and they are placid, friendly and calm.

Otto will grow up in the school environment becoming fully accustomed to the routines of the day and eventually supporting pupils within the setting. As a puppy he will primarily spend time with myself familiarising with the environment in quiet areas with regular rest breaks.

Evidence indicates that benefits of this initiative will include:

Social: a dog provides a positive mutual topic for discussion, encourages responsibility, wellbeing and focused interaction with others. Encouraging respect and thereby improving pupils' relationships with each other, parents and teachers.

Emotional: a school dog improves self-esteem, acceptance from others and lifts mood, often provoking laughter and fun. Dogs can also teach compassion and respect for other living things as well as relieving anxiety. Improved behaviour, attendance and concentration, reduced stress and improved self-esteem

Physical: interaction with a furry friend reduces blood pressure, provides tactile stimulation, gives motivation to move and stimulates the senses

Environmental: a dog in a school increases the sense of a family environment, with all of the above benefits continuing long after the school day is over.

Cognitive: companionship with a dog stimulates memory, problem-solving and game-playing. Encouraging expression, participation and shared attention.

Reading: reading to dogs has been proven to help pupils develop literacy skills and build confidence, through both the calming effect the dog's presence has as well as the fact that a dog will listen to them read without being judgmental or critical.

Obviously, bringing any animal into school is not something to be approached lightly, both for the animal and for the pupils and adults. We have discussed the practicalities, including everything from risk assessments and insurance to dealing with training, toileting and children's allergies. A full policy and risk assessment is available on the website (<https://www.pilgrim.lincs.sch.uk>) and in each base. I also attach a Q and A guide.

Pupils will not be left alone with Otto and they will be taught how to be around a dog before introductions are made. As he will be very small when he first visits, Otto will have limited contact with pupils but this will increase as he grows and is trained. We will show him where he can go, when he can play, when he needs to be calm and quiet and what to chew (and what not to chew!). He will spend his first months primarily with his owner.

Otto will not be able to 'roam' around the school and will only have access to restricted areas. Longer term, we anticipate his role being varied to include things such as taxi duties, reading interventions, healthy activity lessons, as a distraction and to comfort pupils in distress and if appropriate on home visits to help particularly 'stuck' pupils.

Only a small number of named staff handlers will be able to work with Otto and all will receive information and build relationships prior to doing so.

Please ensure you inform us promptly if your child has any relevant allergies or phobias or if for any reason you would prefer them not to have contact with Otto. He will begin visiting from 6th September 2022.

We hope you will join us in welcoming him to The Pilgrim School family and embrace all that he has to offer.

Yours faithfully

Bev Lee
Executive Assistant Head
The Pilgrim School





What about hygiene?

Otto will be thoroughly checked for any illnesses and will stay at home with my family and other dogs if he presents as unwell on any day. He will be fully vaccinated. Designated areas near each base will be allocated for toileting (offsite) and staff will dispose of any waste. Whilst training, any puppy 'accidents' will be thoroughly cleaned with disinfectant spray and pupils advised. He will have no access to the kitchens.

What about the dog's welfare?

Otto will be introduced to the school environment gradually, starting with one/two days a week and building to fulltime as he grows and develops. He will have limited contact with pupils whilst still a puppy and will always have regular rest breaks as an adult. He will spend down time with his owner in the office area of each base away from busy areas and will be taken outside at regular intervals. If it is a particularly busy day in base or for his owner he will stay at home to ensure his needs can be met. He will have a planned timetable so that he does not become overwhelmed. Pupils will be regularly reminded how to interact with dogs safely and what signs of stress may look like. He is primarily a family dog and will live with myself and my family and two other dogs. He will attend training classes and have an extensive socialisation programme. All costs related to his care will be met by my family.

Q and A

My child is scared of dogs?

Some pupils may have had upsetting experiences and thus have a fear of dogs. Otto's training will help him to be calm and gentle and we hope that with proper guidance and handling, pupils will be able to overcome their fear of animals and grow in respect and appreciation for them. However, Otto will only have contact with children who are comfortable to meet him.



My child has allergies?

It is understandable that some of you may be concerned about possible allergic reactions to a school dog. Otto will be regularly groomed and has been carefully chosen because of his coat which we expect to be non-shedding. He will only be allowed in situations with pupils who voluntarily work with him. Certain areas of the school will be completely out of bounds if allergies are apparent.

FOR MORE INFORMATION

Our website is a valuable resource and contains not just important information about our school but provides links to organisations, training and other resources to support you and your child. Be sure to check out the following sections:



Together at home:

This section on our website has been designed to both increase your knowledge about what support is available to you and enhance our personal development offer in school.

- Weekly discussion topic - A topical debate style question designed to facilitate open discussion at home. These have links to citizenship, PSHE and careers topics.
- SEND updates - Information about events and/or training from external providers which you may find helpful.
- Careers, Post-16 and Work Experience Opportunities - Links to weekly 'Job of the week' content which is covered in bases in morning tutorials, college and post 16 provider visits and work experience opportunities from various providers.
- PSHE tasks - Designed to complement any PSHE lessons your child is currently engaged in. Tasks will be set weekly for keystage 3, year 10 and year 11.

Term Dates & Upcoming Events:

Please check out our visual calendars which set out what is coming up across the school and in each base.

Regular updates can also be found on social media....



The Pilgrim School
Lincolnshire



@PilgrimLincs



ottotheschooldog

What I can bring to Pilgrim School?



Items not allowed:

Knives or weapons	Alcohol	Stolen items
Illegal drugs	Energy Drinks	Fireworks
Laser Pens	Rope / cable ties	Solvents
Stink bombs	Pepper sprays and gas canisters	Pin Badges

Electrical devices including mobile phone / iPad chargers

Offensive materials – pornographic / racist / homophobic / extremist material (in any medium)

Any items fashioned to cause injury i.e. a sharpened stick, shards of glass, razor blades

Items to be handed into the office on arrival at school:

Any cigarette, matches, lighters (these will be returned at break / lunchtimes if you have offsite permission from parents for use during a supervised smoking break)

E-cigarette / Vapes

Any medication you may require through the day (we will also need parental consent for this)

Emergency medication such as epipens or insulin may be kept with you

We consider the safety of all pupils at our school very highly and ask for parents to support where necessary. This may include checking bags before pupils leave home.

In very rare circumstances we may seek to do a bag search upon arrival at school.

Stationery Equipment:

We encourage independence and organisation but please be aware that items such as scissors, compasses, staplers and pencil sharpeners are all available for pupils to use in school. We therefore ask for these particular items to be left at home.

Should there be a particular need for any of these items, please discuss with your PSWS

